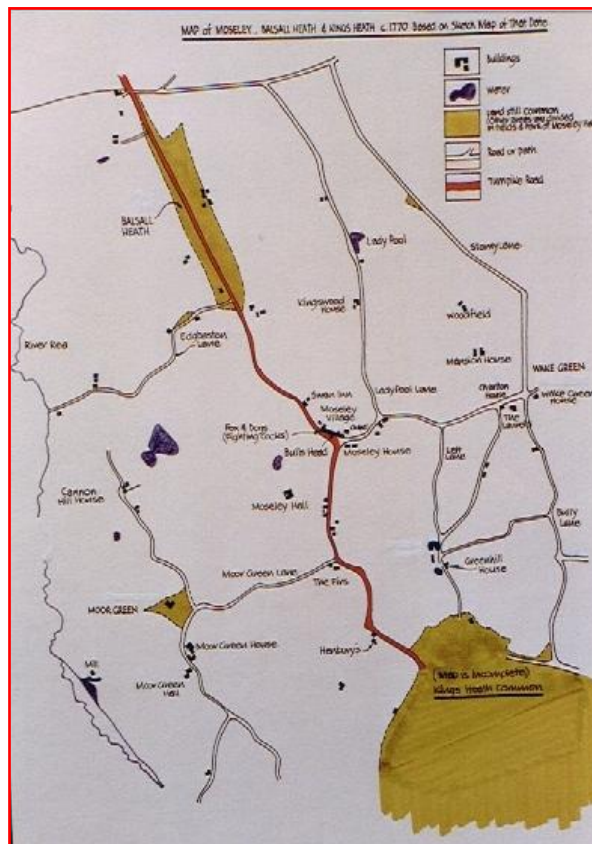
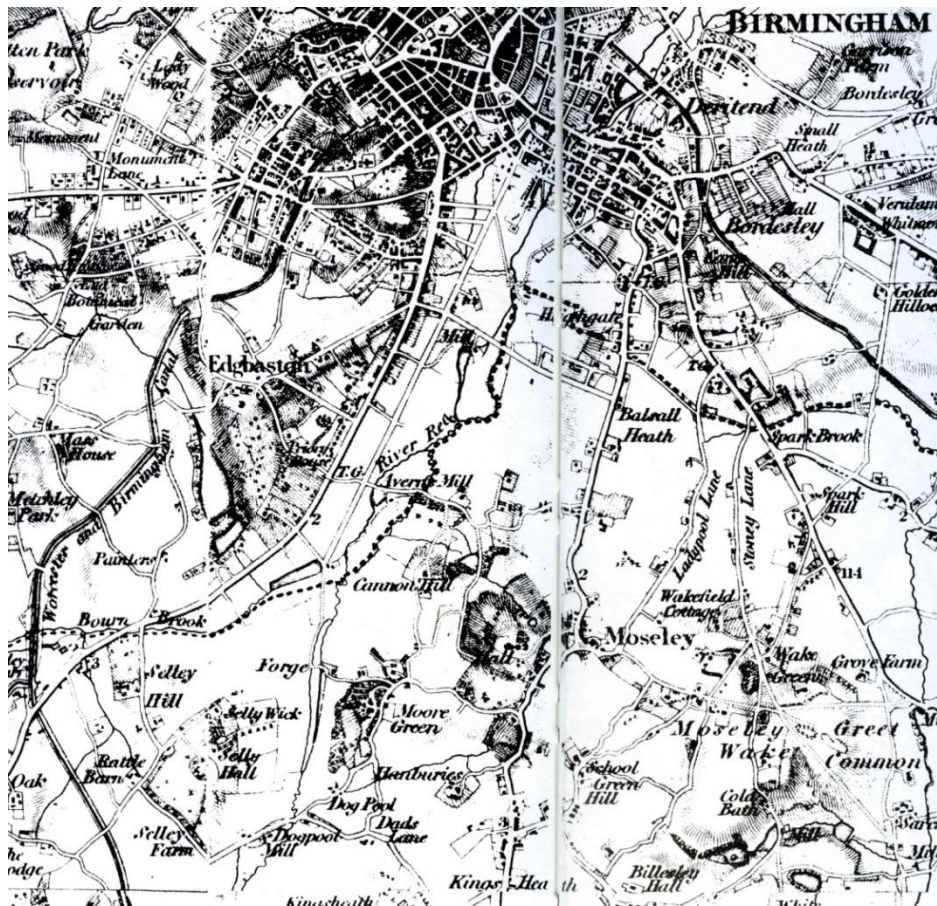


Moor Green in Maps



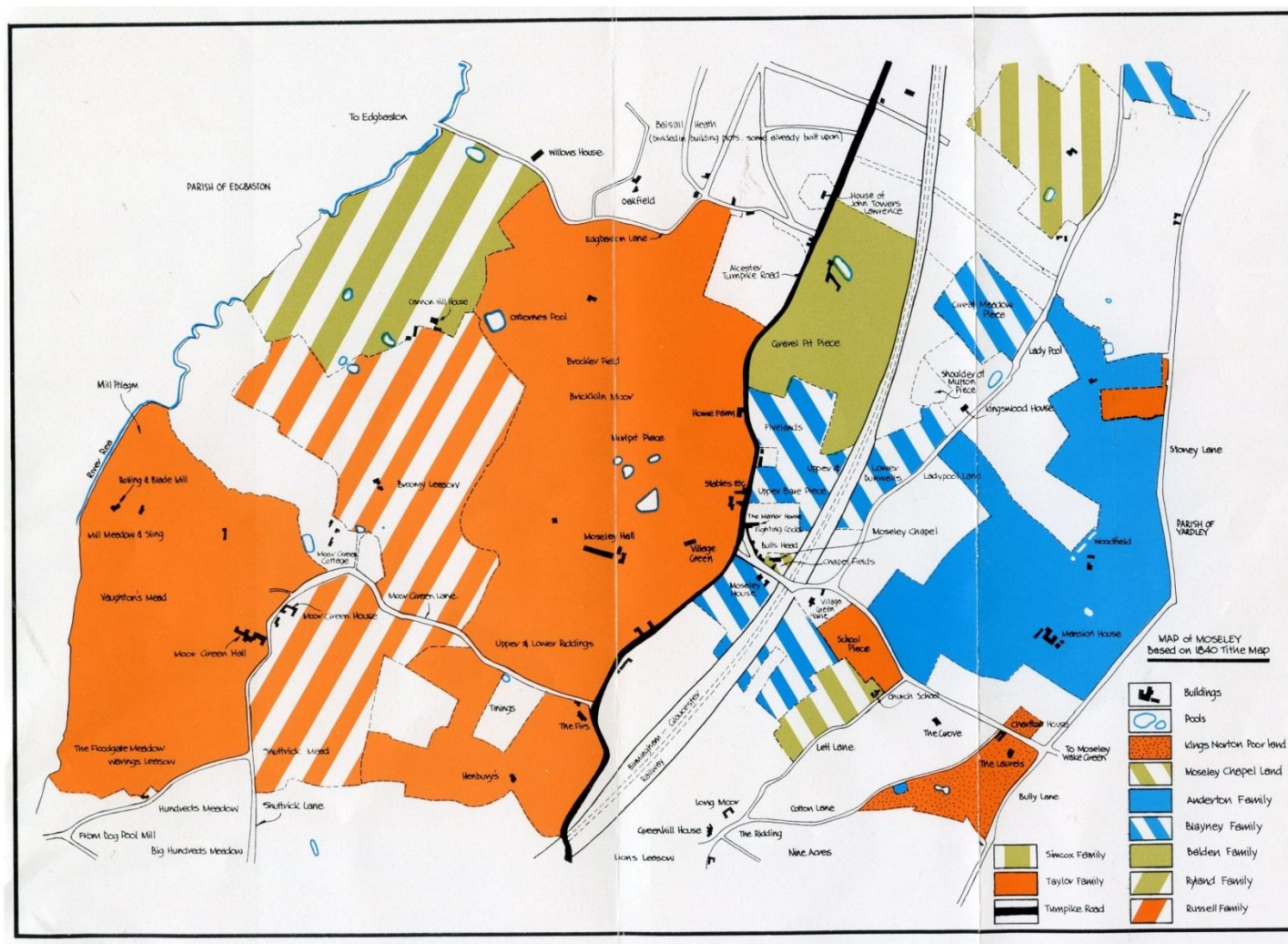
Moor Green 1770.¹

¹ Moseley Society History Archives (MSHA).



1834, 1: 1 Mile.²

²The Village Atlas: The Growth of Birmingham and the West Midlands 1831-1907, (Edmonton; The Village Press, 1989).



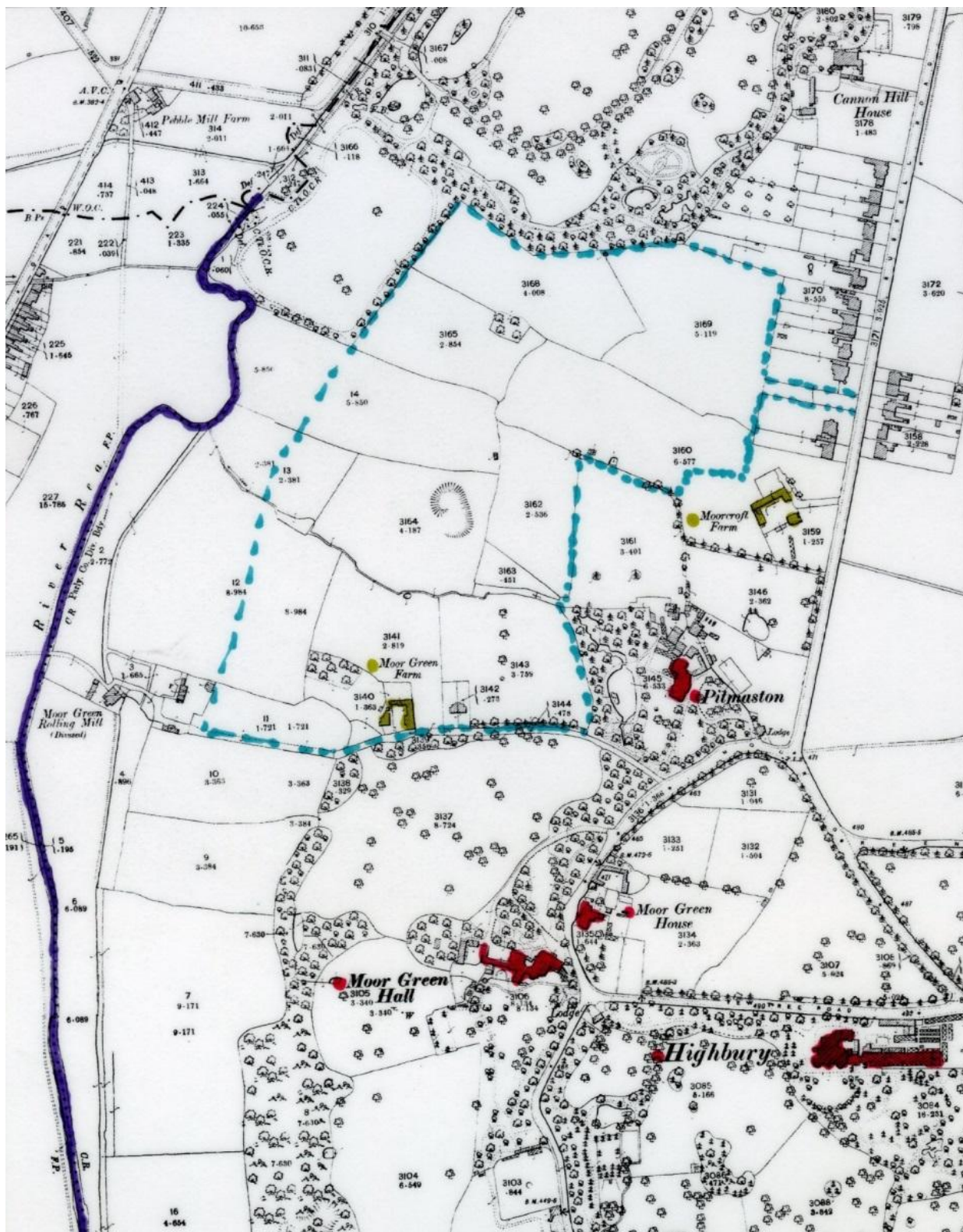


The Blood Map



Surveyed 1881 -88. Published 1895, 1" to 1 mile.³

³The Village Atlas: The Growth of Birmingham and the West Midlands 1831-1907, (Edmonton; The Village Press, 1989).

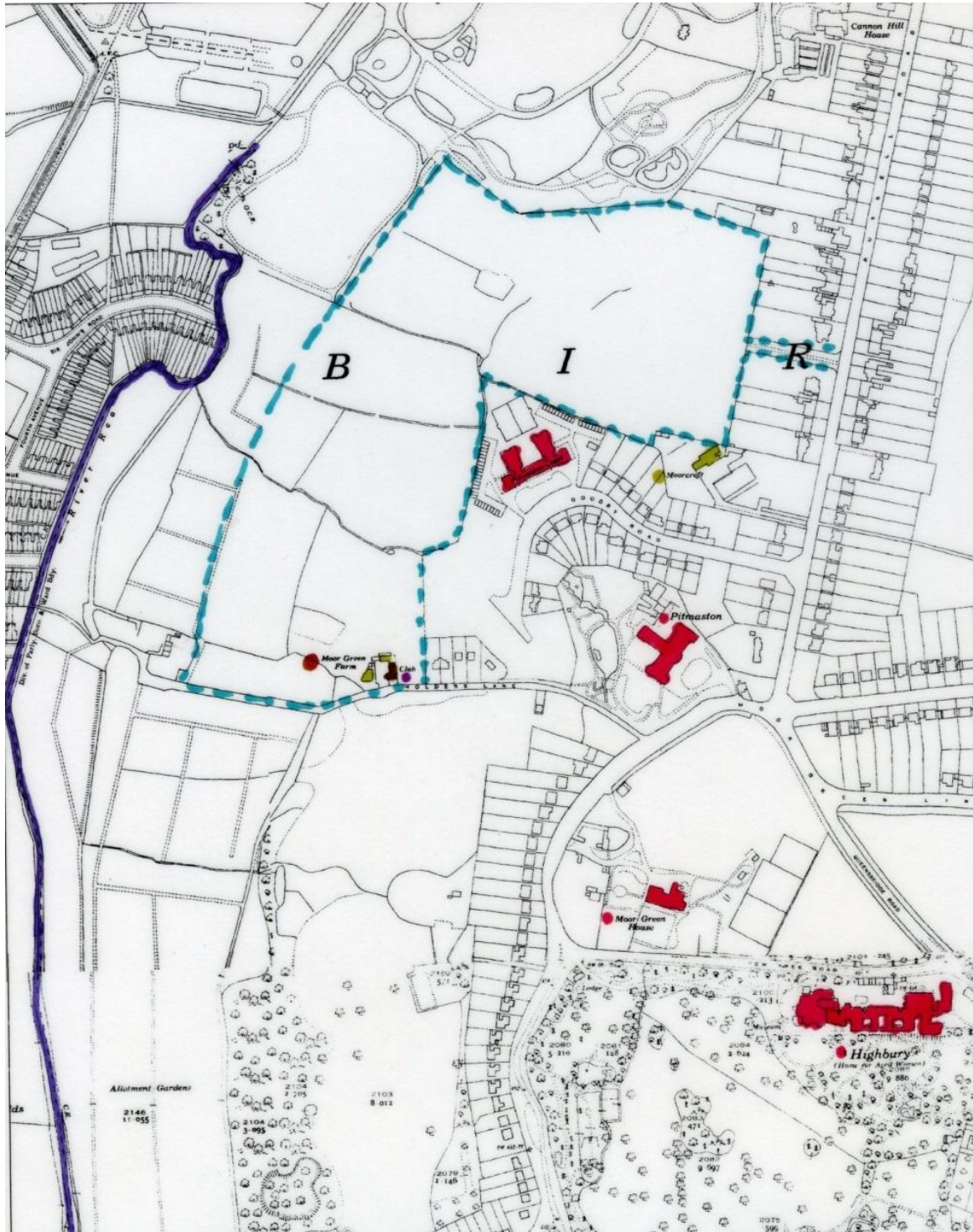


1900s.

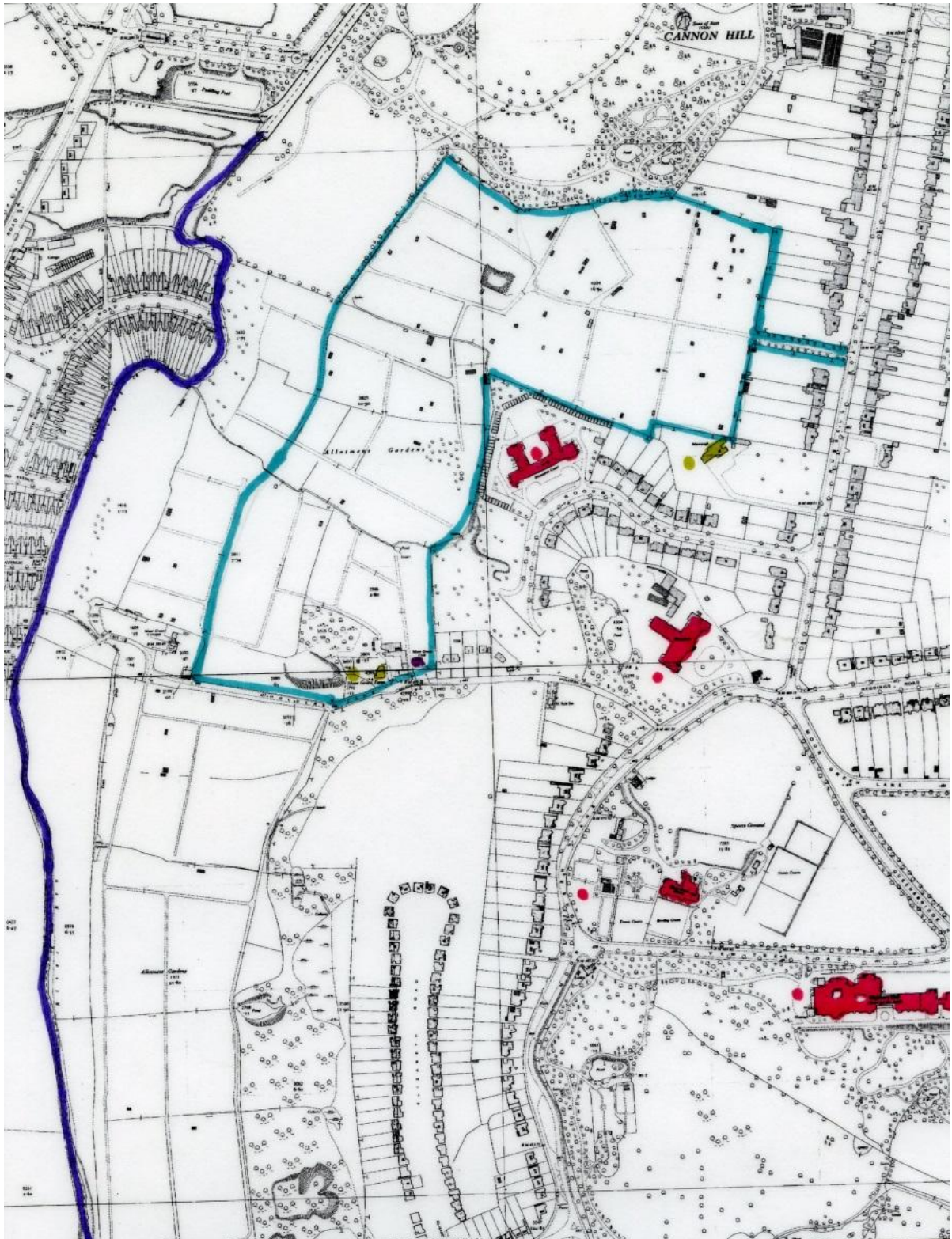


1921.⁴

⁴www.ponies.me.uk , Andrew Rowbottom, website of Old Ordnance Survey Maps ,Popular Edition, Birmingham, 1921.



1930s.



1850s



1970s.⁵

⁵<https://www.theironroom.wordpress.com>

