

BIRMINGHAM HERITAGE



Your heritage
in the heart of England



www.birminghamheritage.org.uk

Aston Hall

Trinity Road,
B6 6JD
0121 348 8100



Aston Parish Church

Witton Lane,
B6 6QA
0121 327 3880



Austin Village

Longbridge,
B31 4JA
See Heritage Forum
website



Back to Backs

Hurst Street/
Inge Street,
B5 4TE
0121 666 7671



The Barber Institute of Fine Arts

University of
Birmingham,
B15 2TS
0121 414 7333



Bells Farm House

Bells Farm Close,
Druids Heath,
B14 5QP
0121 433 3532



Birmingham Assay Office

1 Moreton Street,
B1 3AX
0121 236 6951



Birmingham Botanical Gardens

Westbourne Road,
B15 3TR
0121 454 1860



Birmingham Cathedral (St Philip's)

Colmore Row,
B3 2QB
0121 262 1840



Birmingham Museum & Art Gallery

Chamberlain Square,
B3 3DH
0121 348 8032



Birmingham Oratory

Hagley Road,
Edgbaston,
B16 8UE
0121 454 0496



Birmingham Parish Church (St Martin's)

Edgbaston Street,
B5 5BB
0121 600 6020



Blakesley Hall

Blakesley Road,
Yardley,
B25 8RN
0121 348 8120



Brandwood End Cemetery Friends

Woodthorpe Road,
B14 6EQ
0121 605 4316



Capability Brown

His Legacy in the City

See Heritage Forum website



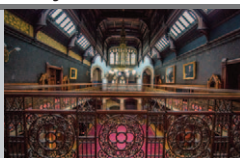
Castle Bromwich Hall Gardens

Chester Road,
Castle Bromwich,
B36 9BT
0121 749 4100



Chamberlain Highbury Trust

Highbury Hall,
4 Yew Tree Rd,
Moseley, B13 8QG
07816 582541



The Coffin Works

13-15 Fleet Street,
B3 1JP
0121 233 4790



Handsworth Old Town Hall

20 Slack Lane,
Handsworth,
B20 2JL
0121 747 5266



The Harry Gem Project

The History of
Lawn Tennis
See Heritage Forum
website



The Hive – New Standard Works

43-47 Vittoria Road,
B1 3PE
07805 304 294



Holy Trinity Church, Birchfield

Trinity Road,
Birchfield,
B6 6AH
0121 356 4241



Holy Trinity Parish Church

Trinity Hill,
Mill Street, Sutton
Coldfield, B72 1TF
0121 321 1144



Lapworth Museum of Geology

University of
Birmingham,
B15 2TT
0121 414 7294



The Library of Birmingham

Centenary Square,
B1 2ND
0121 242 4242



Lightwoods House and Park

Adkins Lane,
B67 5DP
0121 569 4141



Lunar Society

Boulton & Watt,
founder members
on the £50 note.
See Heritage Forum
website



Manor Farm Park Friends

389 Bristol Road South,
B31 2AB
07968 325639



Martineau Gardens

Priory Road,
Edgbaston,
B5 7UG
0121 440 7430



Moor Pool Heritage Trust

Moor Pool Hall,
The Circle,
Harborne, B17 9DY
0121 426 2908



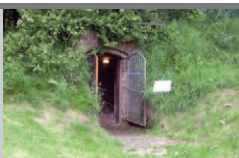
Moseley Dovecote & Garden

Alcester Road,
Moseley, B13 8JL
See Heritage Forum
website



Moseley Icehouse

Alcester Road,
Moseley, B13 8DD
See Heritage Forum
website



Moseley Road Baths

Moseley Road,
Balsall Heath,
B12 9BX
0121 439 0320



Museum of the Jewellery Quarter

Vyse Street,
Hockley,
B18 6HA
0121 348 8140



New Hall Mill

Wylde Green Road,
Sutton Coldfield,
B76 1QU
See Heritage Forum
website



The Pen Museum

Frederick Street,
Jewellery Quarter,
B1 3HS
0121 236 9834



Pugin's Birmingham

His Legacy in the
City
See Heritage Forum
website



RBSA Gallery

4 Brook Street,
B3 1SA
0121 236 4353



The Roundhouse

1 Sheepcote Street,
B16 8AE
0121 716 4077



Sarehole Mill

Cole Bank Road,
Hall Green,
B13 0BD
0121 348 8160



Selly Manor Museum

Maple Road,
Bournville,
B30 2AE
0121 472 0199



Sherborne Wharf Heritage Boats

Sherborne Street,
B16 8DE
0121 455 6163



Soho House

Soho Avenue,
Handsworth,
B18 5LB
0121 348 8150



Stirchley Baths

2-4 Bournville Lane,
B30 2JT
0121 464 9072



St Alban the Martyr Church

Conybere Street,
Highgate, B12 0YH
See Heritage Forum
website



Thinktank, B'ham Science Museum

Millennium Point,
Curzon Street,
B4 7XG
0121 348 8000



St Chad's Cathedral

Saint Chad's
Queensway,
B4 6EU
0121 230 6201



Tolkien's Birmingham

See Heritage Forum
website



St Laurence Church

Church Hill,
Northfield,
B31 2LX
0121 475 1518



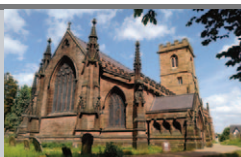
Transport Museum Wythall

Chapel Lane,
Wythall,
B47 6JA
01564 826471



St Mary's Church

Hampstead Road,
Handsworth,
B20 2RW
0121 554 3407



Weoley Castle Ruins

Alwold Road,
Weoley Castle,
B29 5RJ
0121 348 8120



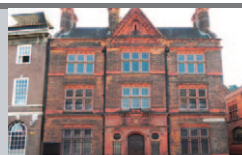
St Mary's Convent

Hunters Road,
Handsworth,
B19 1EB
0121 554 3271



West Midlands Police Museum

The Lock Up,
Steelhouse Lane,
B4 6NW
See Heritage Forum
website



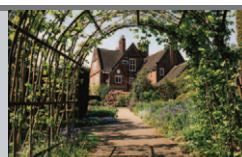
St Paul's Church

St Paul's Square,
B3 1QZ
0121 236 7858



Winterbourne House and Garden

58 Edgbaston Park
Road,
B15 2RT
0121 414 3003



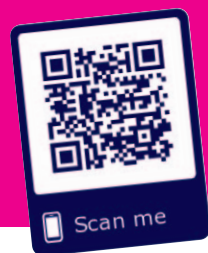
BIRMINGHAM HERITAGE FORUM



Birmingham Heritage Forum



@HeritageBham



This leaflet will help you plan your visit to experience the City's rich heritage. For more detailed information and links to Heritage Forum members' own websites, please go to: www.birminghamheritage.org.uk

For further tourism and heritage information please go to:
www.visitbirmingham.com



Visit Birmingham

West Midlands Growth Company

As we countdown to the Birmingham 2022 Commonwealth Games, come and discover for yourself what makes Birmingham and the West Midlands the perfect backdrop. Join in with our colourful & eclectic calendar of festival and events. Wonder at our forward-thinking architecture or explore our majestic waterways, lined with history, culture & lifestyle.

 @visit_bham  VisitBham  Visit_Birmingham

BLUE BADGE TOURIST GUIDES



Here to help. See the tour guides section of the website, or call direct:

Guiding You Ltd.	07788 581539
Guide-Link Booking	07984 904816
Roger Bailey	024 7669 1212
Mary Moore	0121 705 1364
Ann Nunn	0121 705 2538
Diana Perowne	0121 472 6633
Vicky Nailor	07545 567301
Black Heritage Walks Network	07593 894406



Birmingham Heritage Week

Birmingham Heritage Week is a city-wide festival that celebrates Birmingham's rich and diverse heritage. Many Heritage Forum members will be joining in this heritage festival in September.

birminghamheritageweek.co.uk



BIRMINGHAM 2022 FESTIVAL

commonwealth games

Birmingham 2022 Festival Commonwealth Games from March to September 2022, This national celebration will explore a diverse range of cultural heritage.

birmingham2022.com/festival



heritage open days

Every September we celebrate our fantastic history and culture. Many Heritage Forum members will open their doors for FREE as part of this national celebration.

heritageopendays.org.uk

Supported by:

THE
LIMOGES TRUST



Birmingham
City Council

William A Cadbury
Charitable Trust